

QUICK-SETUP PIPE/BORE CLEANING SYSTEM



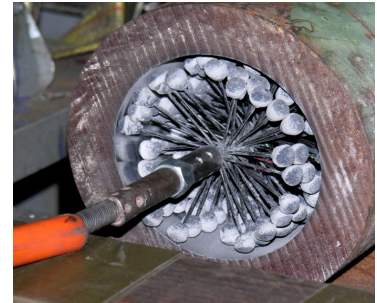
- 1) Lay TCM-3000/TCM-1000HS machine horizontally on floor and connect flexible shaft to machine. Attach airline to machine. **(TCM-3000/TCM-1000HS is preset at approx. 90psi.)**. Remove air footswitch from TCM-series tool box and lay on floor close to tube/bore. Note: TCM-3000 has a variable speed control. **With large brushes, Never Operate machine at high speed. Slower speed is better** for pipe cleaning!
- 2) Connect correct brush to flexible shaft. Tighten jam nut. Connect Flexible shaft to TCM-3000/1000HS.
- 3) Attach either compress air or water hose to TCM-3000/TCM-1000HS. This option will flush the debris out of the pipe or tube. **Depress footswitch or** , this starts shaft rotation and slowly insert flexible shaft into bore until brush is 1/2 way out of the far end of tube. Stop TCM-3000/TCM-1000HS and use Black Tape on flexible shaft to mark how far flexible shaft must be inserted to clean entire tube length. To remove flexible shaft, depress the footswitch and the shaft will rotate in which will make cleaning tubes easier.
- 4) **YOU ARE READY. Note: Let the machine come up to speed before cleaning or boring pipes/tubes. DO NOT FORCE! Let the cleaning tool do the work.**

Notes:
Keep flexible shaft as straight as possible. This will keep them from twisting up.

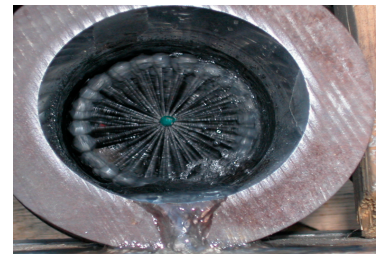
If the flexible shaft twist-up, there is too much load. A smaller brush /tool will help.



**Dry
Brushing**



**Wet
Brushing**

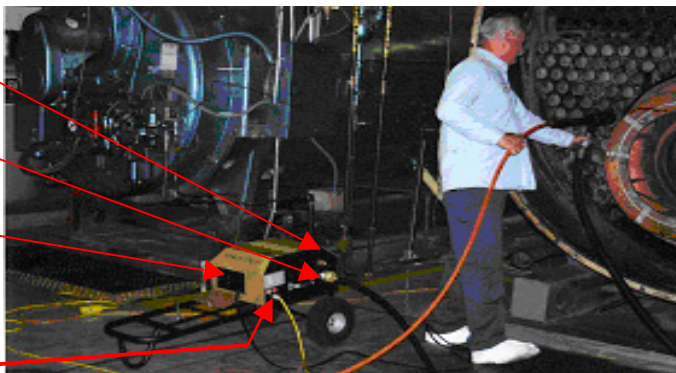


Connection for Air/water flushing

Connection for Flexible Shaft.

Footpedal compartment

Extra Power Outlets- Electric Unit only.



**Finish &
Clean
Pipe**

